



The Lower Brushy Creek Water Control & Improvement District operates and maintains 23 flood control structures in eastern Williamson and western Milam Counties. These earthen dams were designed and constructed by the USDA Natural Resources Conservation Service.



FIND REAL-TIME LAKE, RIVER AND LOW WATER CROSSING FLOOD INFORMATION FOR WILCO HERE!

Williamson County, the USGS, ATX Floods, and the Upper and Lower Brushy Creek WCIDs have collaborated on a website that gives real-time information on precipitation, stream flows, low water crossings, lake levels, weather radar and 24 hour precipitation rates at monitored sites, all in one place! Scan this QR code then bookmark it on your phone for easy reference.




MONITORING LAKE LEVELS FOR SAFETY

LOWER BRUSHY CREEK DAMS WITH WATER LEVEL GAGES:

- SITE 18 SOUTH OF THRALL
- SITE 20 WEST OF THORNDALE
- SITE 25 WEST OF TAYLOR
- SITE 29 BELOW SAMSUNG
- SITE 32 EAST OF COUPLAND

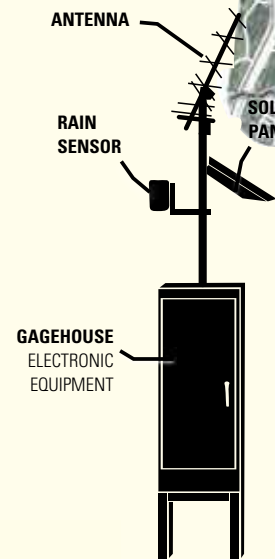
SCAN HERE TO SEARCH THE WCID WEBSITE

WATER-LEVEL GAGE
Tells us what the water level is in the reservoir.

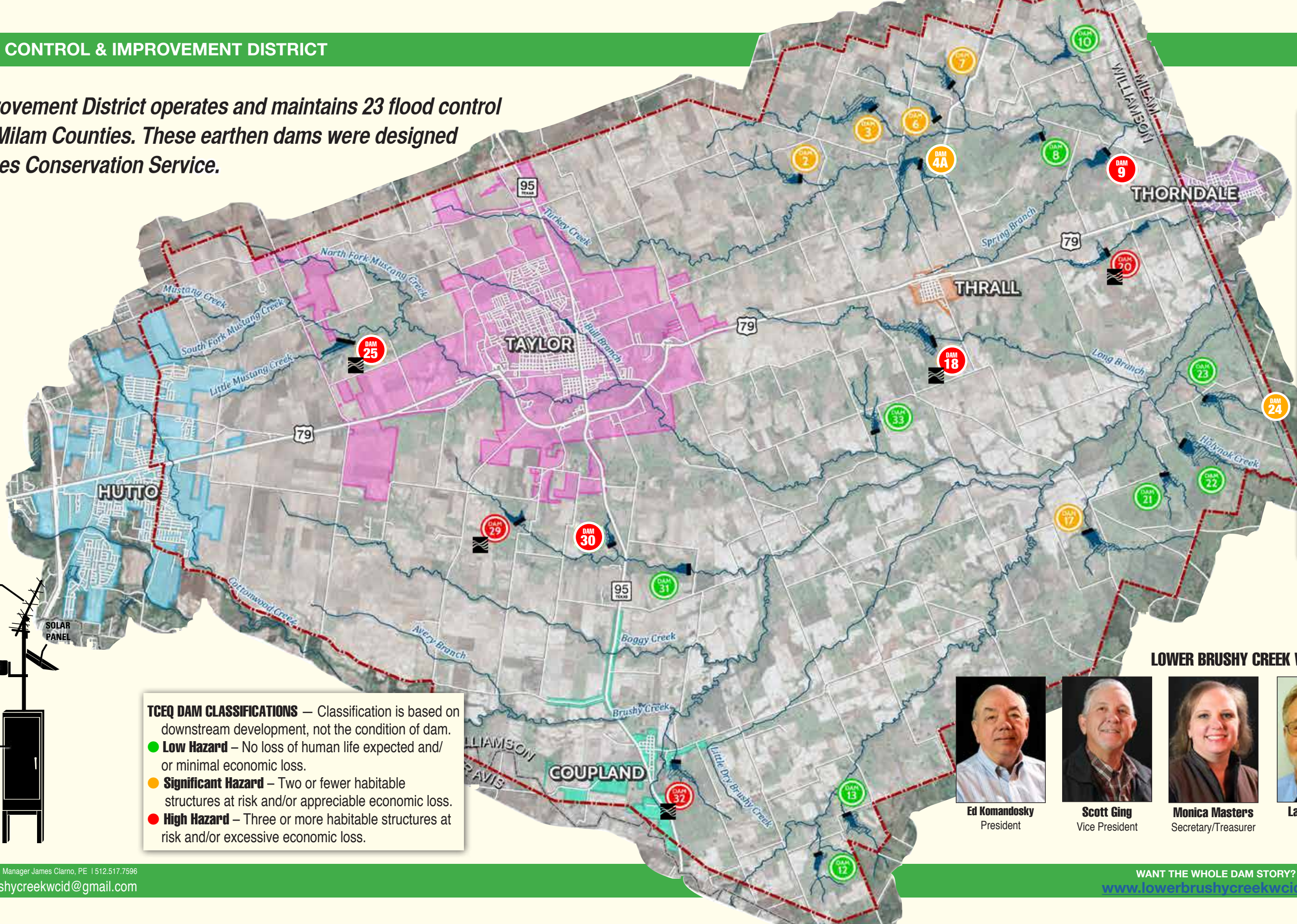
HOW DATA ARE USED

- REAL-TIME INFORMATION**
Water level is collected every 15-minutes and sent to USGS computers where the data is updated in real time and shared online for everyone to see.
- FLOOD FORECASTS**
The National Weather Service uses water-level data to forecast flood stage for a stream and issue flood warnings.
- HEAVY RAINFALL**
Water-level data is linked with nearby rain gauges to improve awareness about current flooding and water conditions.



TCEQ DAM CLASSIFICATIONS — Classification is based on downstream development, not the condition of dam.

- **Low Hazard** – No loss of human life expected and/or minimal economic loss.
- **Significant Hazard** – Two or fewer habitable structures at risk and/or appreciable economic loss.
- **High Hazard** – Three or more habitable structures at risk and/or excessive economic loss.



YOUR TWO-CENTS

The district has a voter-approved tax rate of 2-cents per \$100 of valuation. The tax rate for 2024 will be about 1.63-cents. We efficiently and effectively

- ✦ Operations & Maintenance
- ✦ Regulatory Compliance
- ✦ Emergency Preparedness
- ✦ Capital Improvements

use the **LOWEST TAX RATE** in the area. Your 1.63 cents pays for:

The proposed 2024 Tax Levy of \$825,000 not only supports operations and maintenance, but it serves as the local support for millions more in state and federal grant money.

LOWER BRUSHY CREEK WCID BOARD OF DIRECTORS



Ed Komandosky
President



Scott Ging
Vice President



Monica Masters
Secretary/Treasurer



Laine Holman
Director



Allen David
Director